



**Philippine-Louisiana Historical Society  
(PLHS)**

P. O. Box 214, Marrero, Louisiana 70073 USA

IRS #45-5191478

Established 2012

Tax Exempt #501(C)(3)

Robert Romero  
President

Carmelo Astilla  
Vice President

Zeny Bayuga  
Secretary

Cecile Melendez  
Treasurer

July 16, 2012

Dear APAS,

**Directors:**

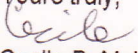
Joju Bautista  
Evelyn Escondo  
Zeno Pimentel  
Lita Romero  
Rosie Catubig  
Nelia Astilla  
Rick Escondo  
Mando Bayuga  
Jimmy Melendez  
Charing Abad  
Lance Harwell  
Bob Grace

Thank you immensely for your donation of \$200.00. The "Manila Village Marker" was erected in front of the Townhall of Lafitte, LA.

We are initiating "Bricks for Manila Village". Your donation entitles you for two engraved brick which will be set on the concrete pad. Enclosed is the form to be filled out and send back to me.

Thanks again for your support.

Yours truly,

  
Cecile B. Melendez

**Honorary Members:**

Leo Herrera-Lim  
Philippine Consul General (Chicago)

Ruth Samonte Limjuco  
Philippine Ambassador, (Ret.)



**Philippine-Louisiana Historical Society  
(PLHS)**

P. O. Box 214, Marrero, Louisiana 70073 USA

IRS #45-5191478

Established 2012

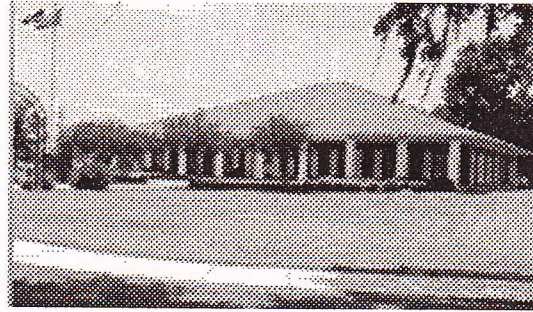
Tax Exempt #501(C)(3)

**Robert Romero**  
President

**Carmelo Astilla**  
Vice President

**Zeny Bayuga**  
Secretary

**Cecile Melendez**  
Treasurer



**Lafitte Town Hall**

**Bricks For Manila Village**

**Directors:**

Joju Bautista  
Evelyn Escondo  
Zeno Pimentel  
Lita Romero  
Rosie Catubig  
Nelia Astilla  
Rick Escondo  
Mando Bayuga  
Jimmy Melendez  
Charing Abad  
Lance Harwell  
Bob Grace

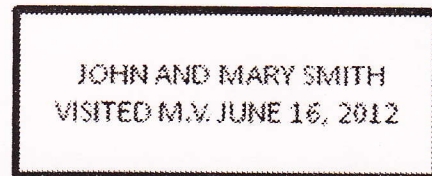
The Philippine-Louisiana Historical Society, Inc. (PLHS), A Non-Profit Organization To Research And Commemorate The Historical Imprints Of Filipinos In Louisiana, Is Initiating A "Bricks For Manila Village" Fundraising Program. This Will Be An Opportunity For Friends To Help Us (PLHS) Raise Money And At The Same Time, Permanently Memorialize Someone As A Supporter Of Our Effort To Preserve The Memory Of Manila Village.

**FOR \$100 YOU CAN PURCHASE AN ENGRAVED (2"X4"X8") BRICK WHICH WILL BE SET ON THE CONCRETE PAD OF THE HISTORICAL MARKER SITE.**

**Honorary Members:**

Leo Herrera-Lim  
Philippine Consul General (Chicago)

Ruth Samonte Limjuco  
Philippine Ambassador, (Ret.)



1. Print Letters Clearly
2. Maximum Number Of Letters (Including Commas, Periods, Etc.) 35
3. Please Make Check Out To : Philippine-Louisiana Historical Society, Inc. Or PLHS
4. Send To: PLHS, Inc.  
P.O. Box 214  
Marrero, Louisiana 70073
5. Deadline For Application Is November 15, 2012

**MISSION STATEMENT**

**TO RESEARCH AND COMMEMORATE THE HISTORICAL IMPRINTS OF FILIPINOS IN LOUISIANA**